

# **i** CRYSTAL LCD Display System



# **indicators** International

*Crystal LCD Signage*

*.....clearly*

Crystal LCD signage opens up huge new possibilities in destination displays. Crystal takes display systems to a new level of high resolution opening up possibilities for graphics, logos and higher definition text. This high resolution system means a crisper, more easily read display for both text and graphics.

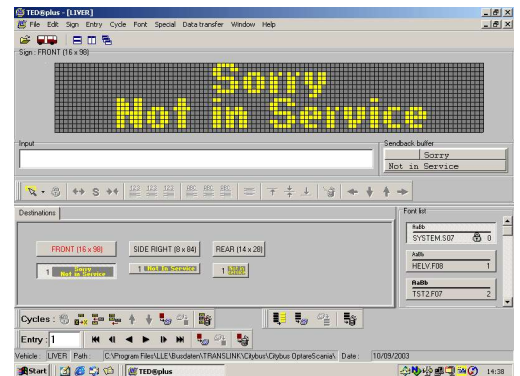
Crystal LCD signage offers the highest standards in reliability - leaving behind technology that relies on mechanics and moving parts.

The Crystal system uses small, close-set octagonal liquid crystal sections. The close-set, detailed design gives you clearer, more accurate displays and gives you the facility to be more creative with your signage.

Light-sensitive automatic adjustment of brightness is standard, to ensure that you get maximum clarity from the sign regardless of weather and lighting conditions. The highest quality liquid crystal is used to ensure you will continue to be happy with your Crystal displays long into the future.

The Crystal system is programmed using our Windows based TED Plus software. This easy-to-use programme makes setting up and changing destinations simple. The information is downloaded to each bus by PC card, to the console in the driver's cab. The console memory can store 10,000 destination sets at a time.

Using TED Plus makes Crystal LCD systems fully compatible with our whole electronic signage range, making fleet management straightforward for you, whatever system you choose.



screen from the TED Plus software



visit us @ [www.indicators-int.com](http://www.indicators-int.com)

T: +44 (0)28 7963 2591 F: +44 (0)28 7963 3927 E: [info@indicators-int.com](mailto:info@indicators-int.com)



*Crystal LCD Signage  
.....clearly*

## Standard Sizes

	<b>Dot size</b>	<b>No. of dots</b>	<b>Display Area</b>
<b>FRONT</b>	8mm	32 x 198	276 X 1734mm
<b>SIDE</b>	6mm	28 x 176	167 x 1120mm
<b>SIDE</b>	6mm	28 x 132	167 x 840 mm
<b>REAR</b>	6mm	28 x 44	167 x 280mm

## Specification

<b>Operating Voltage</b>	24V DC (18-32 V)
<b>Sign Technology</b>	LCD, transfective, negative Yellow on black background
<b>Housing</b>	Black velbex coated aluminium
<b>Size of dots</b>	octagonal, 6mm or 8mm
<b>Illumination</b>	24V DC - the back lighting is automatically adjusted to the surrounding brightness
<b>Current Draw</b>	Sign & electronics 0.3A Illumination 1.5-3.8A depending on size of sign
<b>Temperature Range</b>	-20°C to +70°C
<b>Programming</b>	TED Plus Windows-based software
<b>Loading</b>	RAM card or laptop
<b>Angle of View</b>	160°

We reserve the right to alter products and/or their specifications at any time without prior notice.