

i LEDO BENEFIT BENEFIT Display System



indicators International

*Technology to make your life easier...
LEDO BENEFIT LED Signs*

The development of the LEDO BENEFIT BENEFIT LED system is a move towards maintenance-free destination display systems.

LEDO BENEFIT offers all the benefits of automatic operation, maintenance-free components, large memory capacity, easy programming and most importantly clear display.

Not only this, but the LEDO BENEFIT system is also extremely light-weight and slimline for easy and compact installation.

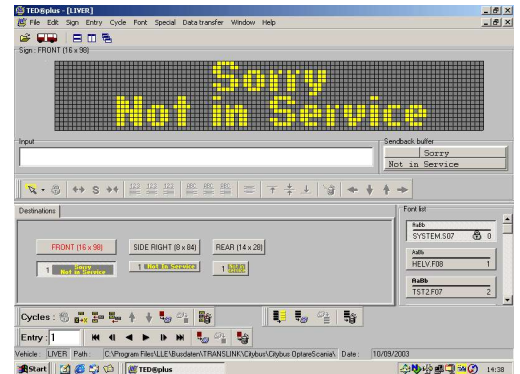
The LEDO BENEFIT system offers two advantages over other LED systems

- 1 - LEDO BENEFIT features automatic brightness control on all signs as standard. This means that whatever the weather your signage responds intelligently without you having to give it a thought.
- 2 - LEDO BENEFIT LED's are sheltered from direct sunlight by canopies across each row. This protection increases the LED's lifespan but more crucially vastly improves the signs readability.

Using high-bright LED's on a dark background shielded from ambient illumination gives high contrast, self-luminous scripts of amazing clarity. Using the latest in high-power LED's yields extremely wide viewing angles.

The LEDO BENEFIT system is built on our IBIS Intelligent On-board System. As with all of our electronic products, LEDO BENEFIT is programmed using our Windows based TED Plus software. This easy-to-use programme makes setting up and changing destinations simple. The information is downloaded to each bus by PC card, to the console in the driver's cab. The console memory can store 10 000 destination sets at a time.

Using TED Plus makes LEDO BENEFIT fully compatible with our whole electronic signage range, making fleet management straightforward for you, whatever system you choose.



screen from the TED Plus software



visit us @ www.indicators-int.com

T: +44 (0)28 7963 2591 F: +44 (0)28 7963 3927 E: info@indicators-int.com



*Technology to make your life easier...
LEDO BENEFIT LED Signs*

Sample Sizes

	Display Resolution	Housing Dimensions (mm)
FRONT	19 x 140	1628 x 295 x 44 mm
SIDE	8 x 84	822 x 150 x 44 mm
REAR	19 x 28	334 x 295 x 44 mm

(Other sizes available upon request)

Specification

Operating Voltage	24V DC (18-32 V)		
Illumination	None required - since they are LED's.		
Housing	2mm Aluminium with Black Velbex		
Weights	Front	19 x 140	11.5 kg
	Side	8 x 84	4 kg
	Rear	19 x 28	3 kg
LED spacing	Front sign spacing		12.7 mm
	Side/Rear sign spacing		9.7 mm
LED Emission Angles	110° horizontal/55° vertical		
LED Emission Colour	Amber		
LED Shape	oval 3x4mm		
Operating Temperature	-40°C to +100°C		
Current Draws (random text - 40% LED's lit)	Front	19 x 140	2.4 A
	Side	8 x 84	1.6 A
	Rear	19 x 28	0.6 A
Features	Optional scrolling scripts Static/Cyclical texts Automatic brightness control Programming with TED Plus Load using PC cards into driver's console		

We reserve the right to alter products and/or their specifications at any time without prior notice.